

In conjunction with our current exhibition, **Wake**, curated by Michele L'Heureux, Dorsky Gallery Curatorial Programs is pleased to present:

All About Water: A conversation with artists Resa Blatman, Stacy Levy, and Naoe Suzuki moderated by Michele L'Heureux

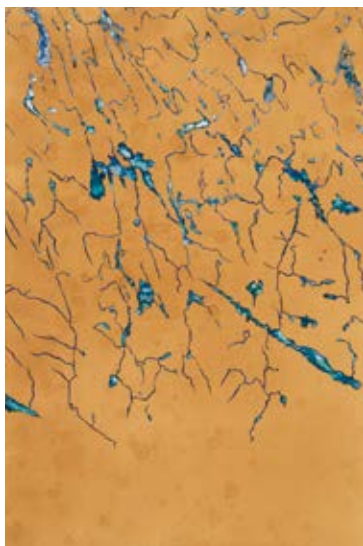
SEATING IS LIMITED | RSVP 718-937-6317 or rsvp@dorsky.org

The work of artists Resa Blatman, Stacy Levy, and Naoe Suzuki addresses the complexities of water as a political, environmental, and human resource. This conversation will focus on each artist's approach to addressing the fragility of our planet's waterways. The artists will talk about the role they'd like their artwork to play in the larger conversation about climate change and how that informs their choices of material, method, and medium.

Resa Blatman's (Somerville, MA) recent work is inspired by a 2015 artists' residency to the Arctic Circle aboard an antique sailing vessel. She creates paintings and installations on PVC, aluminum, wood panels, and Mylar that speak to a warming planet, rising tides, and dying oceans—and to the ways these phenomena are transforming our landscape and natural resources. Blatman's work has been exhibited throughout the US and can be found in numerous public and private collections in the US and abroad.

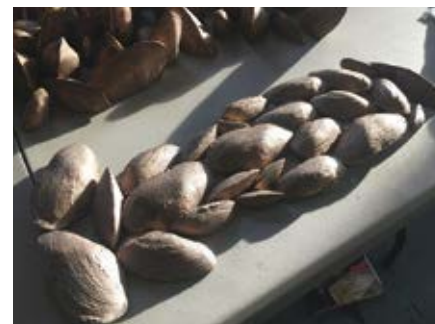


Resa Blatman *Standing Crow*, 2015



Naoe Suzuki *Water is Taught by Thirst (Blue) Central Adirondacks*, 2015

Stacy Levy (Spring Mills, PA) is a sculptor whose work is a vehicle for translating the patterns and processes of the natural world. Regularly bridging art with science, Levy's research often includes collaborations with scientists, fluid dynamic engineers, and geologists. Interested in water-sheds, tides, growth and erosion, she makes projects that show how nature functions in an urban setting, and her work often employs materials from the surveying, landscape and construction industries. Levy's projects have been installed at public sites and in art galleries throughout the US.



Stacy Levy *Wrack Line*, 2018

Michele L'Heureux is Curator and Director of the Galleries at Montserrat College of Art in Beverly, MA. She has spent the past ten years curating exhibitions of contemporary art at higher education institutions and nonprofit art galleries with a focus on interdisciplinary themes and programming, particularly those that bring the humanities and science to bear on art. She is also a visual artist who combines collage, printmaking, and painting to create 2D and 3D works that explore themes of travel, migration, and home.

Naoe Suzuki (Waltham, MA) has created several bodies of work on paper inspired by water. An avid swimmer, Suzuki returns regularly to the Blue Mountain Center in the Adirondacks for studio time and plunges in the cold mountain lake. Her work employs laser-cutting, drawing with Japanese pigment on tea-stained paper, and interactive installations to engage viewers in various conversations about water. Suzuki's work has been exhibited throughout the US and in Japan and is included in numerous collections.

For more information about *Wake*, please visit www.dorsky.org to download the PDF version of the brochure containing the curator's essay.